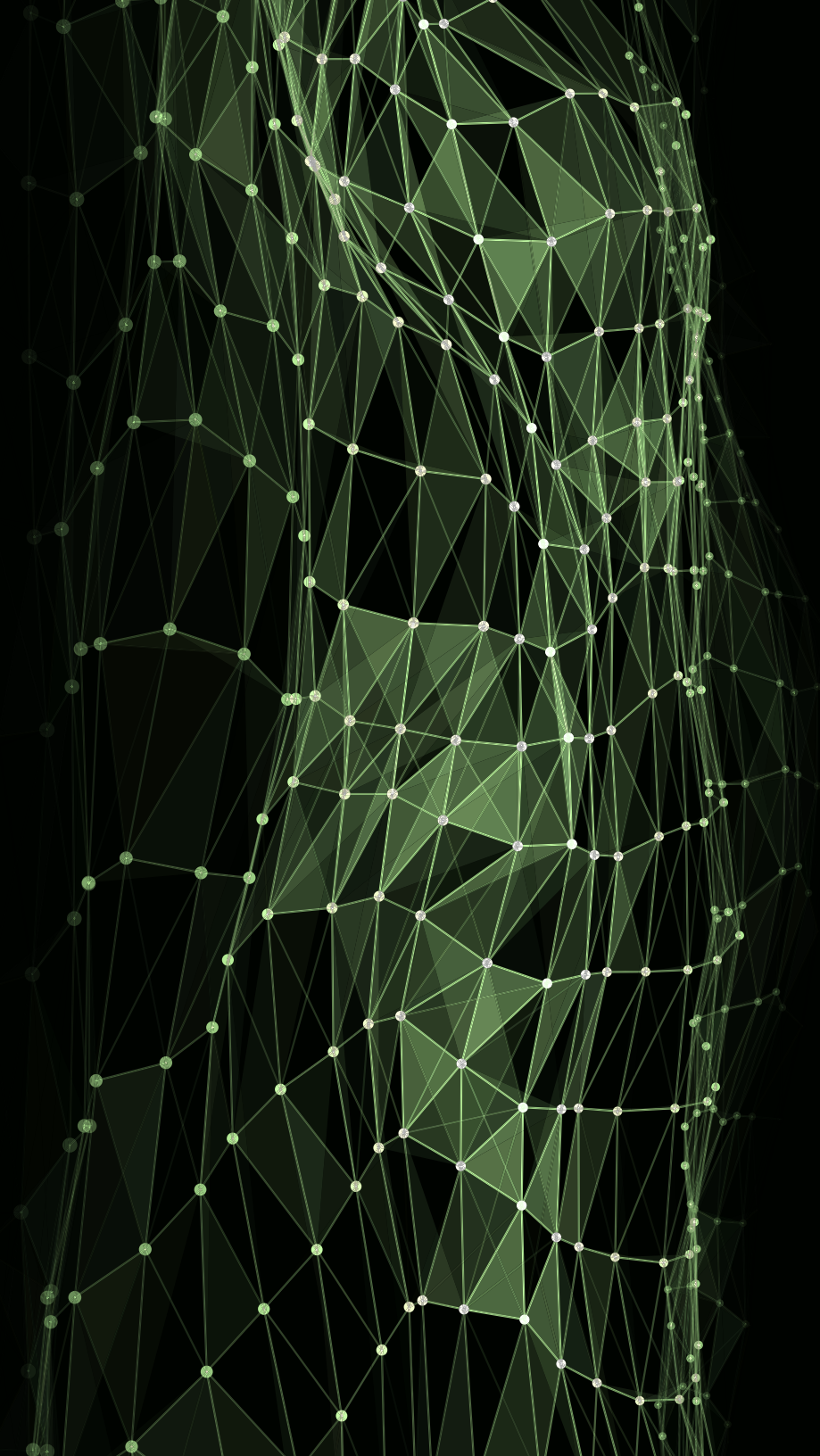


# **The SAP Modernization Trap:** How Leading Enterprises Are Navigating S/4HANA, RISE and AI Without Risking the Wrong Investment



# Why SAP Transformation Feels Harder Than It Should

If you're responsible for an SAP landscape today, you're facing an unprecedented number of decisions.

Every conversation seems to introduce another technology, framework, or deadline. Leaders are being asked to evaluate cloud ERP strategies, assess the role of RISE with SAP, determine how SAP BTP fits into their architecture, and understand how artificial intelligence might transform enterprise processes.

None of these decisions exist in isolation. They all interact with each other, which makes the modernization journey feel complex and difficult to navigate.

Across industries, organizations are hearing about cloud ERP, AI-driven automation, intelligent data platforms, and new innovation frameworks. Each promises significant benefits. Yet when viewed together, they can create confusion rather than direction.

The result is something many SAP leaders quietly acknowledge: **transformation paralysis.**

Organizations know modernization is necessary. They understand the long-term direction of SAP's roadmap. But the path forward feels risky. Move too early and you risk investing in the wrong platform or architecture. Move too late and you risk falling behind on innovation. Meanwhile, the existing ERP environment continues to support critical business operations every day. From a business perspective, the question often becomes simple: if the system works today, why change it?

The purpose of this guide is to bring clarity to that situation. Instead of viewing SAP modernization as one massive transformation, we explore how successful organizations approach it as a structured journey — one that unfolds in stages and delivers value along the way.



# The SAP Innovation Paradox — More Innovation, More Confusion

SAP has never offered more innovation. From cloud ERP and intelligent automation to advanced analytics and AI-driven capabilities, the technology landscape is evolving faster than ever.

Yet for many organizations, this explosion of innovation has created uncertainty rather than clarity.

Leaders are now navigating questions such as:

What is the difference between S/4HANA Public Cloud and Private Cloud?

- How does RISE with SAP change the operating model?
- When should SAP BTP be introduced?
- What role will AI realistically play in enterprise operations?

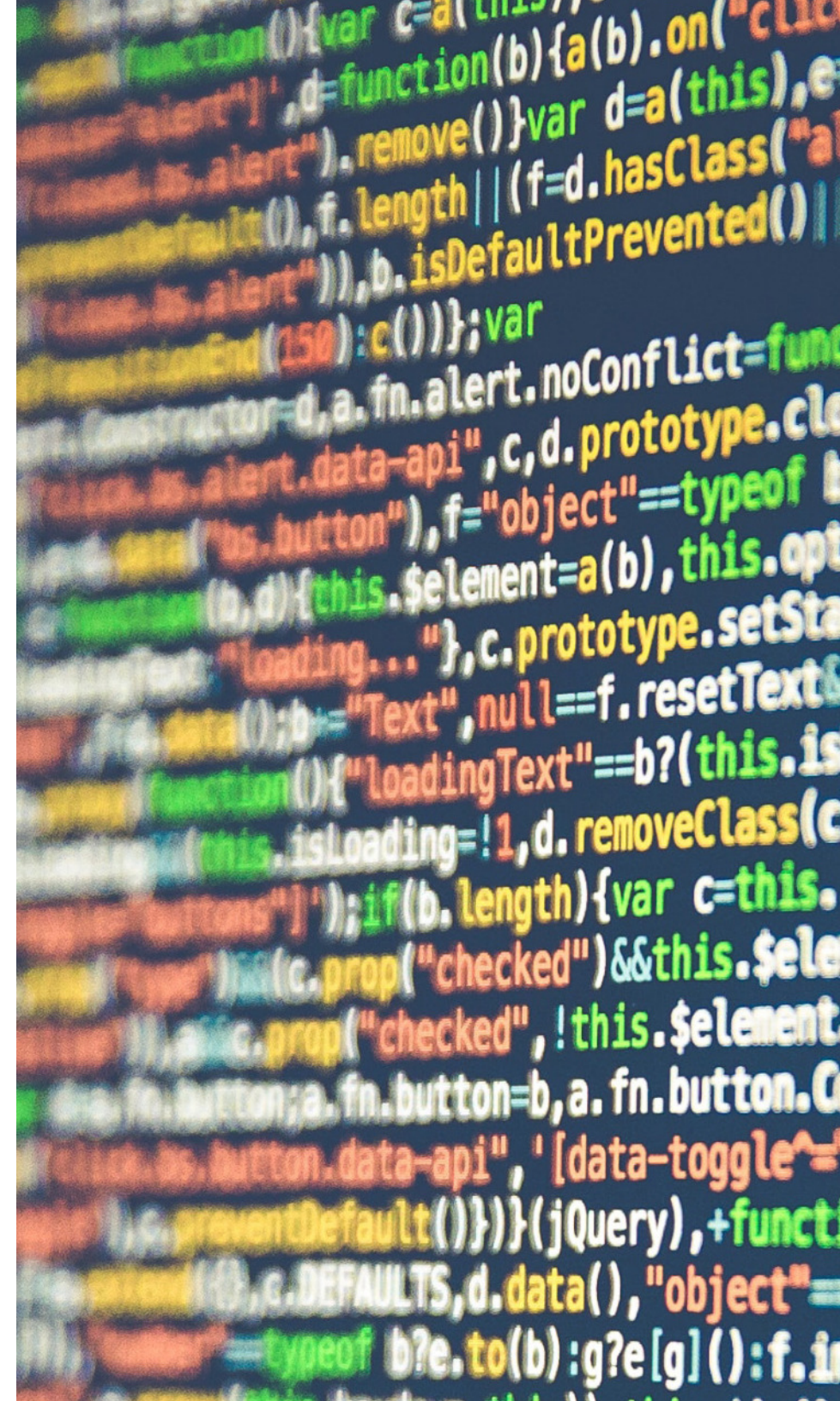
These questions are complicated by the fact that most SAP customers are not starting from a blank slate. Many organizations have mature ECC environments that have been running their businesses successfully for years.

From a purely operational perspective, these systems work. Processes run reliably. Data flows where it needs to go. Users understand the environment.

But at the same time, organizations know that their future innovation strategy increasingly depends on modern platforms and architectures.

This creates a gap between the art of the possible — the innovation showcased in the market — and the art of the practical — what organizations can realistically implement today.

Closing that gap is one of the most important steps in any modernization journey.



# Why Transformation Journeys Stall

Through conversations with SAP leaders across industries, several common challenges consistently emerge.

## Fear of Making the Wrong Decision

Modernization decisions are rarely reversible. Selecting the wrong migration path, platform model, or operating structure can lock organizations into costly strategies for years. As a result, many leaders hesitate while trying to gather more information.

But in a market that evolves this quickly, perfect clarity rarely arrives.

## Uncertainty Around the Operating Model

Moving from on-premises environments to cloud-based models often changes how SAP systems are managed. In models such as RISE with SAP, some responsibilities shift toward SAP itself. While this can simplify operations, it also requires organizations to rethink how they manage and control their systems.

## The Complexity of the Starting Point

SAP landscapes rarely remain static. Over time they accumulate custom code, integrations, workarounds, and process adjustments. Before organizations can fully modernize, they often need to simplify parts of the existing environment.

This foundational work may not be glamorous, but it is essential for enabling future innovation.

## The Biggest Misconception About SAP Innovation

One of the most common misconceptions about SAP modernization is that organizations must transform everything at once.

In reality, the most successful modernization journeys are incremental.

Organizations can begin adopting modern capabilities without immediately replacing their core ERP platform. For example, many companies introduce SAP BTP services to extend existing environments or build integrations that unlock real-time data access.

Examples of practical early steps include:

- Creating integration layers to connect systems more efficiently
- Creating Building extensions outside the ERP core
- Enabling external partners to interact with SAP processes securely

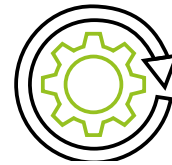
These types of initiatives often deliver immediate business value while laying the groundwork for future transformation.

They are sometimes referred to as “no-regret decisions” – investments that remain valuable regardless of how the broader modernization journey unfolds.



# A Practical Framework For SAP Modernization

Large transformation programs often appear overwhelming because they are presented as single multi-year initiatives. A more effective approach is to view modernization as a journey with three clear stages.



## Simplify

Before major transformation begins, organizations benefit from simplifying their current landscape. This may include analyzing custom code, cleaning and organizing data, and establishing integration strategies.



## Modernize

The next phase focuses on moving the core platform forward. This might involve migrating to S/4HANA, adopting a RISE with SAP model, or transitioning infrastructure to the cloud. Many organizations take a minimum viable change approach during this stage to stabilize the platform.



## Transform

Once the foundation and platform are modernized, organizations can focus on deeper innovation. This is where capabilities such as AI-driven insights, intelligent automation, and advanced analytics can begin delivering significant business value.

**Breaking modernization into these stages allows organizations to progress steadily without overwhelming the business.**



# Where AI Can Deliver Real Value Today

Artificial intelligence has quickly become one of the most discussed technologies in enterprise IT. However, the most impactful AI use cases within SAP environments are often more practical than many expect.

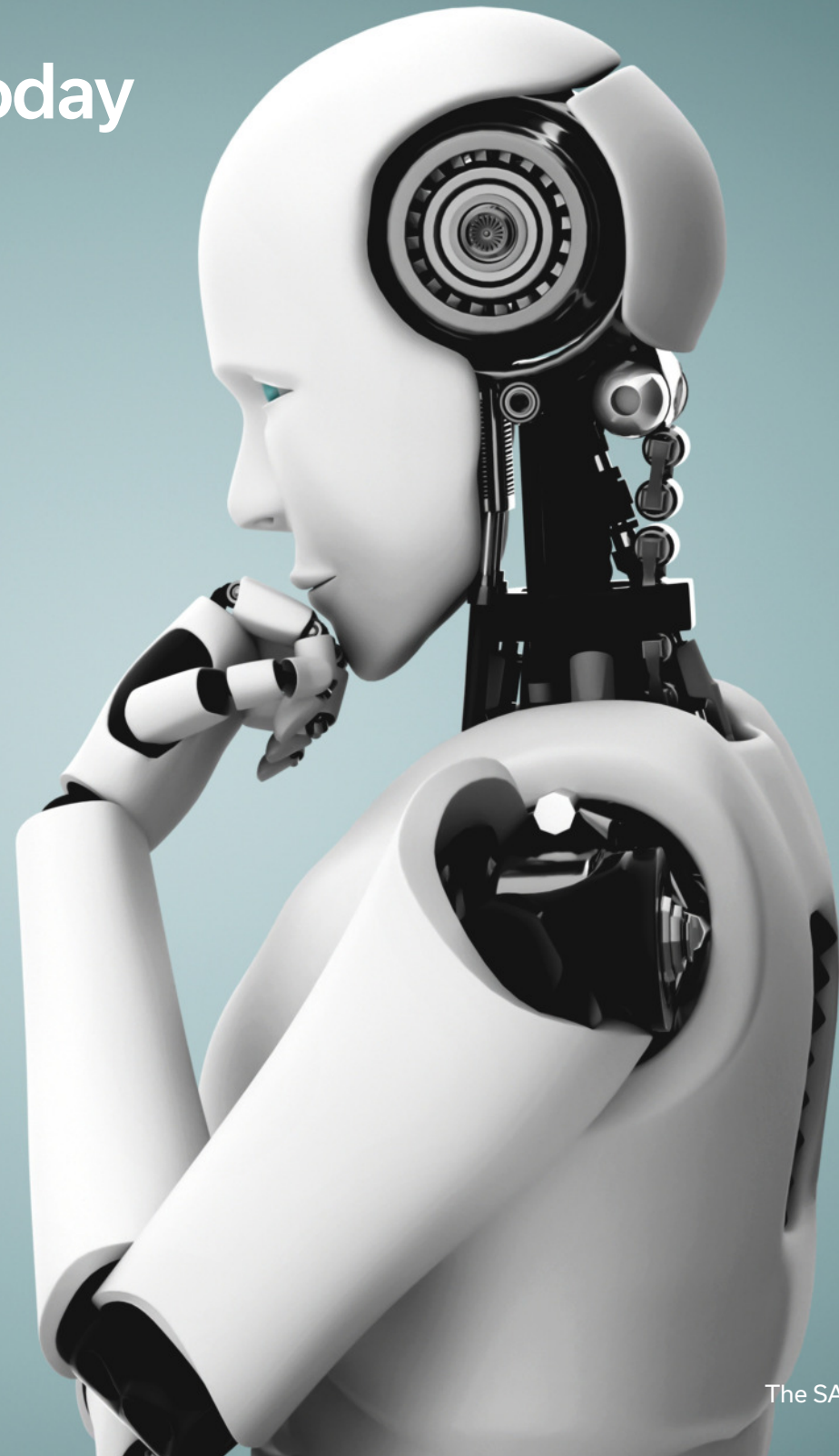
Rather than replacing entire processes, AI frequently enhances the decision-making capabilities of the people who already understand the business best.

Within every organization there are individuals with deep domain expertise who make complex decisions daily. AI can support these experts by summarizing large volumes of information, recommending potential actions, and identifying patterns in data.

For example, finance leaders might use AI to quickly highlight anomalies in financial performance, while supply chain teams could identify emerging risks across global operations.

In this way, AI doesn't replace expertise — it amplifies it.

At the same time, organizations should avoid the temptation to apply AI everywhere. Many challenges can still be solved more effectively through traditional integration or automation. The key is identifying where AI genuinely adds value.



# The Hidden Foundation of AI Success

Behind every successful AI initiative lies something less visible but equally important: data readiness.

Many organizations discover that the hardest part of implementing AI is not building algorithms, but accessing and preparing the data required to support them.

This includes:

- Connecting data across systems
- Cleaning and structuring data sources
- Establishing consistent identity and security models
- Creating trusted data platforms

Without this foundation, AI initiatives often remain isolated experiments.

Organizations that invest in strong data architectures create an environment where AI use cases can be scaled across the enterprise.



# Conclusion

SAP modernization is not simply a technical upgrade. It is a strategic journey that touches operations, people, and business value.

For many organizations, the greatest barrier is not capability — it is clarity.

When leaders gain a clearer understanding of their starting point, the stages of modernization, and the practical opportunities available today, the journey becomes far less intimidating.

The organizations that succeed are not those that attempt to transform everything overnight. They are the ones that simplify first, modernize deliberately, and transform at the right time.

Modernization is not about moving fastest. It is about moving forward with confidence, clarity, and a clear understanding of where technology will deliver the greatest business value.





## ABOUT LEMONGRASS

Lemongrass is a global leader in SAP consulting, focused on helping organizations transform their business processes through innovative solutions and technologies. With a strong commitment to customer success, Lemongrass partners with companies to drive their digital transformation journeys, enabling them to unlock the full potential of their SAP investments.

## CONTACT US

For further information, please visit [lemongrasscloud.com](https://lemongrasscloud.com) or contact us at [info@lemongrasscloud.com](mailto:info@lemongrasscloud.com).